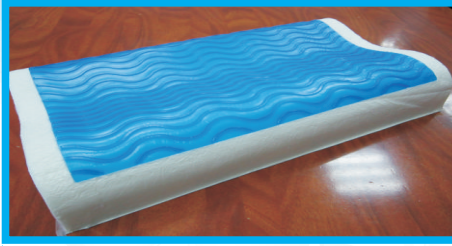


# Typical Application & Product Selection Guide

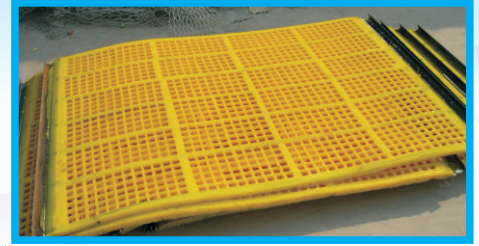
Eco-friendly metal catalyst substitute for mercury, lead and tin



**1** PU Wheel, Cyclone and other Elastomer Miscellaneous Parts  
Reduce energy consumption cost, flexible formula and improve production efficiency.  
REC: DG02, PDAA, HA, E02, E03, HS, RM301, etc.



**2** Soft products: Gel, Magic Sticker, Cold Pillow, etc  
Odorless, no whitening, more resistant to yellowing, no bubbles, no flake cracking.  
REC: 101, 202, T50, BCAT & ZCAT series.



**3** Mine Screen and Scraper made in MDI System  
Long flow period and fast post curing.  
REC: SW series, RM301, etc.



**4** Electronic Grouting Glue, Nameplate Glue  
No bulging, no foaming, low shrinkage.  
REC: GF02, WS8, HAB, K6, etc.



**5** Thermoplastic Polyurethane TPU  
Tin-free, less side reactions, improves the elasticity of low hardness TPU and shortens the forming time. REC: E20CX, T50, etc.



**6** Polyurethane Shoe Sole, Vamp, Heel  
With catalytic thermal activity, good flow and fast forming.  
REC: 8002, SW02D, BCAT & ZCAT series, etc.



**7** RIM Microporous Elastomer  
Not contain organic-tin, abundant flow time, gel strength rises quickly, reduces shrinkage rate.  
REC: 8003M, RM301, NX100, etc.



**8** Spray Polyurea (Polyurethane Urea)  
Solves the defect of easy bulging and bubbling under high temperature and high humidity, Enhances adhesion fastness  
REC: HA02, E16, etc.



**9** Waterproof Coating  
Substitute for tin, avoid bulging / bubbles and dry quickly in winter.  
REC: PD, F1, F2, WS8, WS2, etc.



**10** Floor Coating  
Provide long flow time after mixing, no foaming and fast drying.  
REC: FR01, T62, T50, etc



**11** Eco-friendly Rubber Runway and Silicon PU Ball Court  
Environment friendly and odorless, zero TVOC, fast curing at low temperature.  
REC: V17, V18, WS2, WS8, BCAT & ZCAT etc.



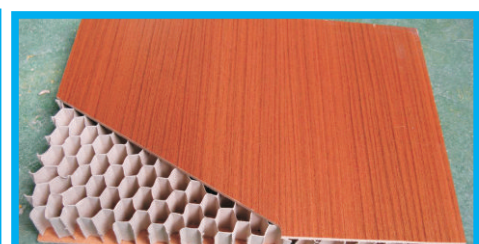
**12** Two-components Adhesive, Sealant  
Tin-free, no foaming  
REC: HAA, HAB, 1001E, T30, etc.



**13** One-component Adhesive, Sealant  
Substitute for tin, avoid bulging / bubbles and dry quickly in winter.  
REC: WS2, WS8, WP01, etc.



**14** Adhesive for Shoes  
Tin-free, high activity, fast viscosity rise, good transparency and compatibility.  
REC: 1301, BCAT & ZCAT, etc.



**15** Rock wool insulation board, two-components adhesive for door industry and wood industry.  
Long flow period, fast post curing and firm bonding.  
REC: 8002, YC01, etc.



# Typical Application & Product Selection Guide

Eco-friendly metal catalyst substitute for mercury, lead and tin



**16 Polyurethane Soft Foam, High/Slow Rebound Material**  
Tin-free, hydrolysis resistance, no failure, long flow period and fast forming.  
REC: 1001E, 101, 8002, 8003M, 8004M, etc.



**17 Integral Skin Foam, includes Imitation Wood, Tire, Steering Wheel, etc.**  
Tin-free, hydrolysis resistant, long flow period, fast forming and bright skin.  
REC: 8002, 8003M, 8004M, etc.



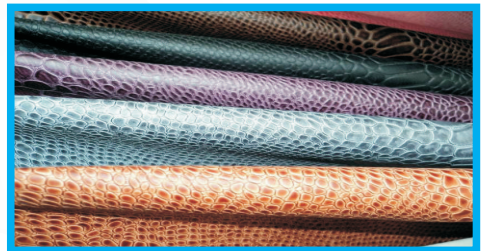
**18 Electronic Foam, Carpet Bottom Back**  
Tin-free, heat sensitive, fast forming.  
REC: RM301, RM60, 202, etc.



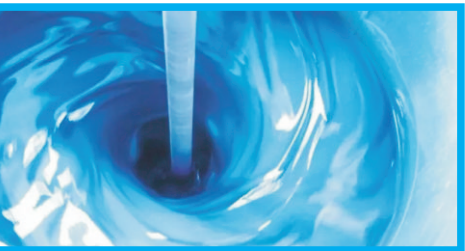
**19 Leaking Stoppage and Structural Reinforcement with Organic Material**  
Tin-free, hydrolysis resistance, no foaming, stable catalysis and low reaction temperature rise.  
REC: MK02, MK02A, MK11, etc.



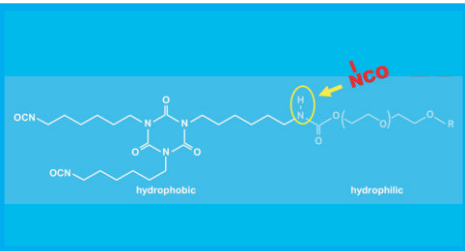
**20 Leaking Stoppage and Structural Reinforcement with Inorganic Material**  
Good compatibility, no stratification and low odor.  
REC: WNT04A, WNT05A, etc.



**21 Solvent free PU leather / Leather Slurry**  
Long flow time, high thermal activity, environmental protection, no butyl tin.  
REC: Rm301, RM60, 202, S02, BCAT & ZCAT, etc.



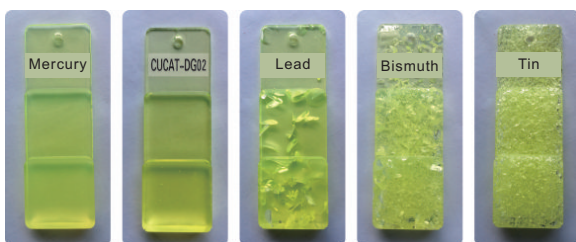
**22 Synthetic Resin / PUD**  
Environmental protection, tin-free, high activity and good compatibility.  
REC: 1301, 101, S02, BCAT & ZCAT, etc.



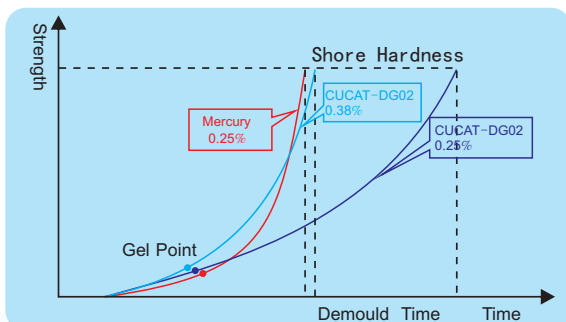
**23 TDI Curing Agent / Waterborne Curing Agent**  
Reduce free monomer, increase functionality and lower viscosity.  
REC: G5A, U2, etc.



**24 Polyurethane Coating**  
Hydrolysis resistance, high compatibility, high gloss, less pitting, fast curing at low temperature.  
REC: 101, 201, 101W, 201W, etc.



Features of water insensitive and non foaming



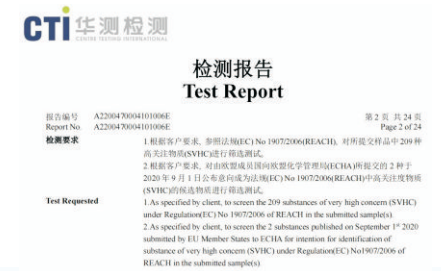
Process performance



Invention Patent



RoHS Report



REACH Report

Attached table: catalyst selection guide (divided by reaction system):

Product Model	① Applicable System																
	Aromatic Isocyanates															Aliphatic isocyanate	
	TDI				MDI50/PAPI				② PMDI/C-MDI								Castor Oil
	PPG/PTMG		Polyester		PPG/PTMG		Polyester		PPG		PTMG		Polyester				
Diamine	Diol	Diamine	Diol	Diamine	Diol	Diamine	Diol	Diamine	Diol	Diamine	Diol	Diamine	Diol				
CUCAT-DG02 *	★★	☆	☆		★★	☆	★★		★★	☆	★★	☆	☆				
CUCAT-K6 *	★	★	☆	☆	★	★	☆	☆	★	★	☆	★	☆		☆	★	
CUCAT-HAB/HAA	★	★	☆	☆	★	★	☆	☆	★	★	☆	★	☆		☆	★	
CUCAT-HA	★	☆			★	☆			☆	☆	☆	☆					
CUCAT-E02/E03	★	★	☆	☆	★	★	☆		★	★	☆	☆				☆	
CUCAT-ET01	☆	☆	☆		★	★	☆		★	★	☆	☆					
CUCAT-PDAA	★	☆	★	☆	★	★	☆	☆	☆	☆		☆				★	
CUCAT-HSF										★★		★		☆			
CUCAT-HS												★★	★	★★			
CUCAT-SW02D			★★				★					☆	★	★★			
CUCAT-SW05/SW06													★	★★			
CUCAT-RM50/RM60										★		★	★	★			
CUCAT-GF02						☆								☆	★★		
WCAT-WS8		★				★									★★		
WCAT-WP01																★★	
WCAT-WH03		★				★											
AUCAT-101	★	★	☆	☆	★	★	☆	☆	☆	★		☆			☆	★	
AUCAT-201/202	★	★	★	★	★	★	☆	★	★	★	☆	☆			☆	★	
AUCAT-1001E	★	★	☆	☆	★	★	☆	☆	★	★		☆			☆	☆	
AUCAT-AS11	★	★	☆	☆	★	★	☆	★	★	☆					☆	★	
AUCAT-1301 *	☆	☆	☆	☆	☆	☆	☆	☆		☆		☆				★	
AUCAT-RM301	★	★	★	★	★	★	★	★	★	★★	★	★★	☆	★★		★★	
FOCAT-8002		★★		★★		★★		★★		★★		★★		★★			
FOCAT-8003M		★★				★★				★★		★★					
ZCAT-T50	★	★	★	★	★	★	★	★	★	★	★	★				★	
BCAT/ZCAT 系列	☆	☆	☆	☆	☆	☆	☆	☆	☆	☆	☆	☆				☆	

Notes: ① Meaning of Icons : ★★ — Strongly recommended   ★ — recommended   ☆ — usable   \* — The catalyst has thermal activity  
 ② PMDI — Pure MDI ; C-MDI — Carbodiimide modified MDI

(This guide is only a rough directional guidance. The actual formula and process are complex and diverse, which is subject to actual verification)